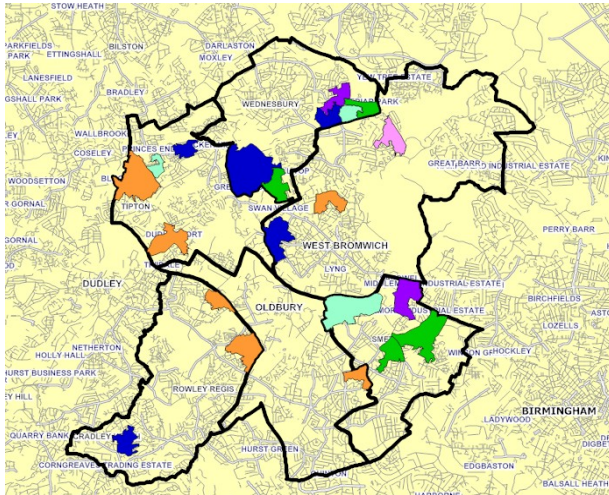


# Case Study: Sandwell Children and Young People's Trust Experiences of Families Living on Low Incomes 2009



## BACKGROUND

M-E-L Research was commissioned to consult families living on low incomes in Sandwell about their experiences (and those of their children), by Sandwell Children and Young People's Trust Partnership.

## PURPOSE

The purpose of the study was to inform Sandwell's forthcoming Child Poverty Strategy. The work was designed to identify the lived experiences of families living on low incomes as well as informing actions the CYP Trust could take to help

mitigate the impact for families and children living on low incomes.

## METHODOLOGY

The approach to the work was exploratory and qualitative, with 52 household in-depth interviews being carried out with adults by two experienced M-E-L researchers. All respondents had at least one child living in the household aged 0-15 years, and were either in receipt of either income support, income-based Job Seeker's Allowance or pension credits; or in receipt of Working Families Tax Credit or Child Tax Credit.

To target the sampling, CACI Insights software was used to overlay areas of Sandwell ranking in the top 5% and top 10% on the Income Deprivation Affecting Children Index (IDACI), overlaid with the Acorn (A Classification of Residential Neighbourhoods) Hard Pressed category. Maps of local neighbourhoods were produced for researchers to use during fieldwork.

## OUTCOMES

The data generated was analysed into key themes, shaped around Financial Resources, Social Interaction, Family and Wider Relationships, Health and Wellbeing, and Choices and Control. A series of illustrative case studies were produced to provide further insight. Maps were produced using CACI Insights data to map Index of Multiple Deprivation (IMD) and Acorn data for Sandwell, to provide the wider context of families living in poverty in the Borough. Key implications were extracted, which will inform the content of Sandwell's forthcoming Child Poverty Strategy.

## TESTIMONIAL

Mark Gibbs, Senior Joint Commissioning Manager, Sandwell Children and Young People's Services:

*"The work was conducted to a high standard and has identified practical actions to help families on low incomes, which will be fed into our Child Poverty Strategy. The work also revealed how resilient families in Sandwell are, and cope well, sometimes under difficult circumstances".*

For further information about our work with Sandwell CYP Trust, please contact Anne Forshaw @ [anne.forshaw@m-e-l.co.uk](mailto:anne.forshaw@m-e-l.co.uk) or call 0121 604 4664